

**Internal mounting plate:** L -30 mm H -30 mm

**Useful surface (cover):** L -40 mm H -40 mm

**Useful Depth:** P -15 mm

**M5 wheelbase Fastenings:** H -30 mm

for APD 99, APD 914, APD 920, APD 928, APD 1016

Order code	Model	External dimensions mm			kg	m <sup>3</sup>
		L	H	P		
013020010	APD 9 9	90	90	90	0,5	0,001
013020020	APD 9 14	90	140	90	0,8	0,002
013020030	APD 9 20	90	200	90	0,8	0,002
013020035	APD 9 28	90	280	90	1,0	0,003
013020040	APD 10 16	100	160	110	1,1	0,003
013020050	APD 16 16	160	160	110	1,5	0,004
013020070	APD 16 25	160	250	110	2,3	0,006
013020060	APD 20 20	200	200	110	2,2	0,006
013020080	APD 20 25	200	250	130	3,0	0,009
013020100	APD 20 30	200	300	130	3,4	0,011
013020115	APD 20 40	200	400	150	4,8	0,016
013020090	APD 25 25	250	250	130	3,5	0,011
013020110	APD 30 30	300	300	150	5,2	0,017
013020120	APD 30 40	300	400	150	6,4	0,023
013020130	APD 40 40	400	400	150	8,3	0,030

All data can undergo changes without notice.



Cable inlet plate  
P. 86



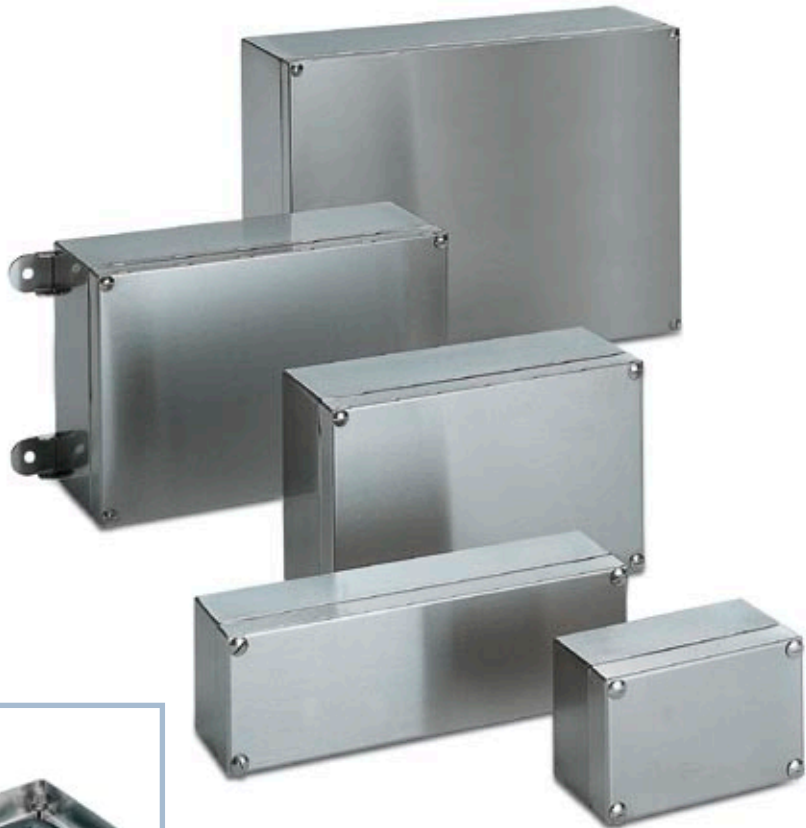
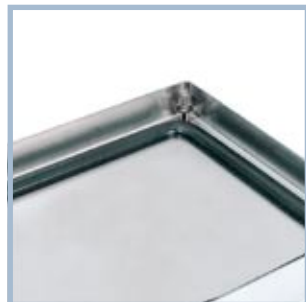
Wall fixing brackets  
P. 82



Conductive gasket  
P. 102






Pedestal support  
P. 83



### Standard operating

**APD** with solid cover with internal mounting plate starting from the model APD 1016. Models APD 99-914-920-928-1016 are equipped with 2 M5 threaded nuts to screw the fixing brackets; 4 M5 threaded nuts for the other models.

Stainless steel terminal boxes AISI 304, complete with solid cover fixed through stainless steel screws, held in place by a safety ring. Standard manufactures with internal mounting plate, starting from the model APD 1016, are available in stock.

<b>Category of protection and certification</b>	 <b>IP66 IK10</b>	EN 60 529/09.2000 EN 50 102/05.96
	 <b>TYPE 4x 12, 1, 4</b> <b>NEMA 4x 12, 1, 4</b>	Standard 508 Standard 250
	 <b>EN 62208 : 2003</b>	89/392/EEC
<b>Thickness</b>	1 mm	
<b>Material</b>	AISI 304 Wnr. 1.4301 brushed fine scotch brite medium	
<b>Internal mounting plate</b>	2,5 mm FeZn	
<b>on request</b>	Manufacturing in AISI 316 Wnr. 1.4404	